



Raising standards and driving outstanding lifelong learning for over 1,400 pupils across 6 mainstream primary schools (plus Bingham opening in 2022) and over 700 pupils in 8 additional needs schools (one more due to open in 2023).



Community Inclusive Trust is an education charity and not-for-profit sponsor of mainstream primary schools and special needs schools across the East Midlands.

Our schools enhance the education provision of the community they serve and improve the life chances of the pupils.



Who are we and what do we stand for?

- We are passionate about providing the highest quality education for ALL our learners.
- One of the reasons we are so keen to work in Nottinghamshire is how closely our values align with Nottinghamshire County Council.
- In order to create **TRUST** within our new community, we will proactively build effective partnerships with all our stakeholders.
- **RESPECT** is a core value at C.I.T - we celebrate all individuals, organisations and cultures.
- We provide an **OUTSTANDING PROVISION** using the breadth of curriculum as well as extracurricular and enrichment opportunities to help prepare our children for their futures.
- We nurture and inspire everyone through our **PERSONALISED LEARNING** approach so that ALL learners are included.





The need for a new primary school in Bingham has been identified by Nottinghamshire County Council, to serve the new housing development at Romans' Quarter.

- C.I.T Academies has been approved as sponsor by Nottinghamshire County Council.
- The proposed opening date for the new school is September 2022.
- Bingham Primary School will have a cohort of 210 pupils aged 4 to 11, plus a 26 place nursery.
- Admissions from September 2022 will be for Reception pupils through to Year 6. Admissions to the school will be via the Local Authority.
- The new school will become a 'hub' for the new local community.
- This presentation outlines C.I.T's proposal for the new school and explains more about the Trust. We welcome your feedback.

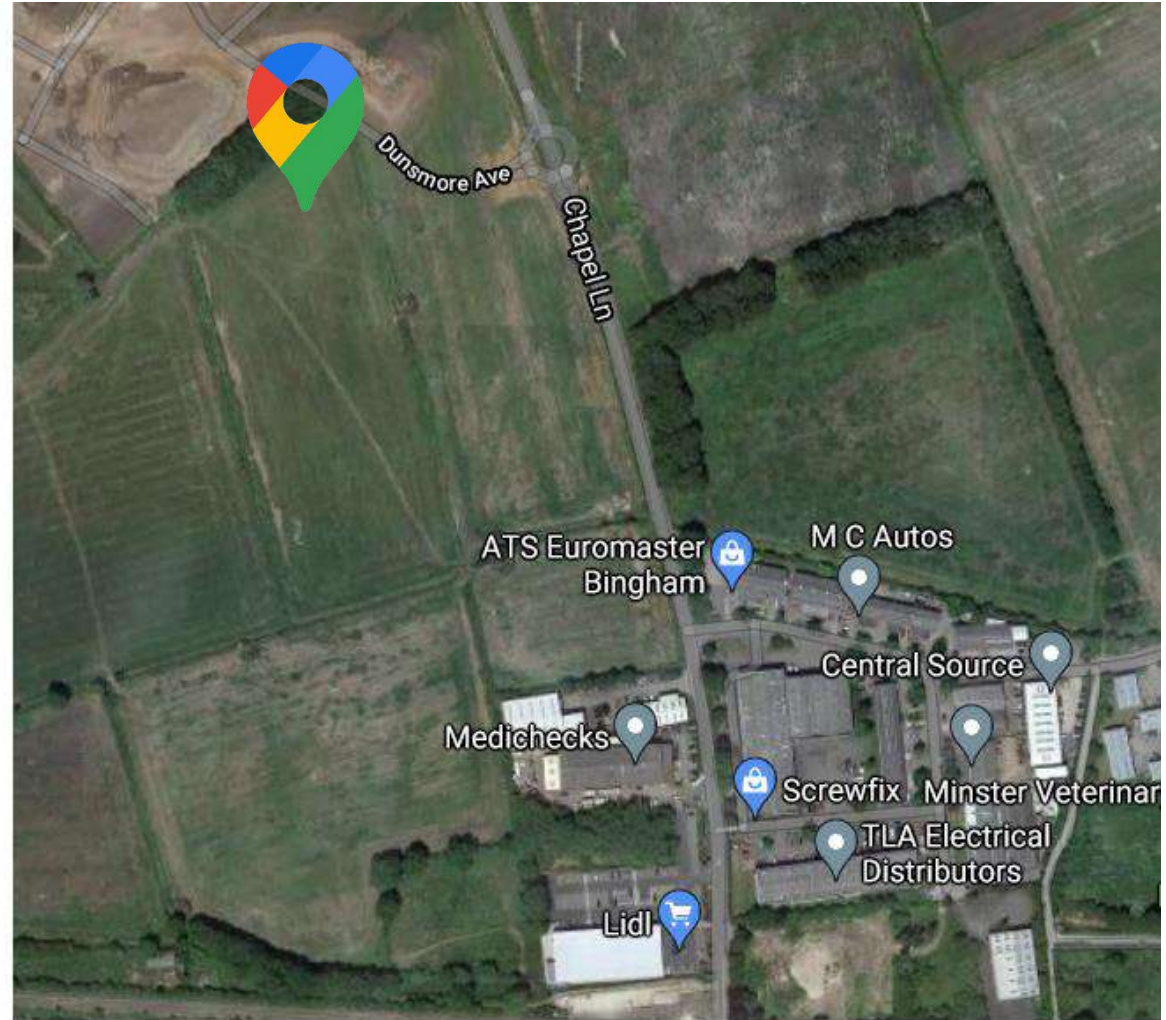
This consultation opened on Thursday 7th October 2021, and will close on Thursday 18th November 2021.

Proposed site:

Off Chapel Lane
Bingham
Nottinghamshire
NG13 7AB

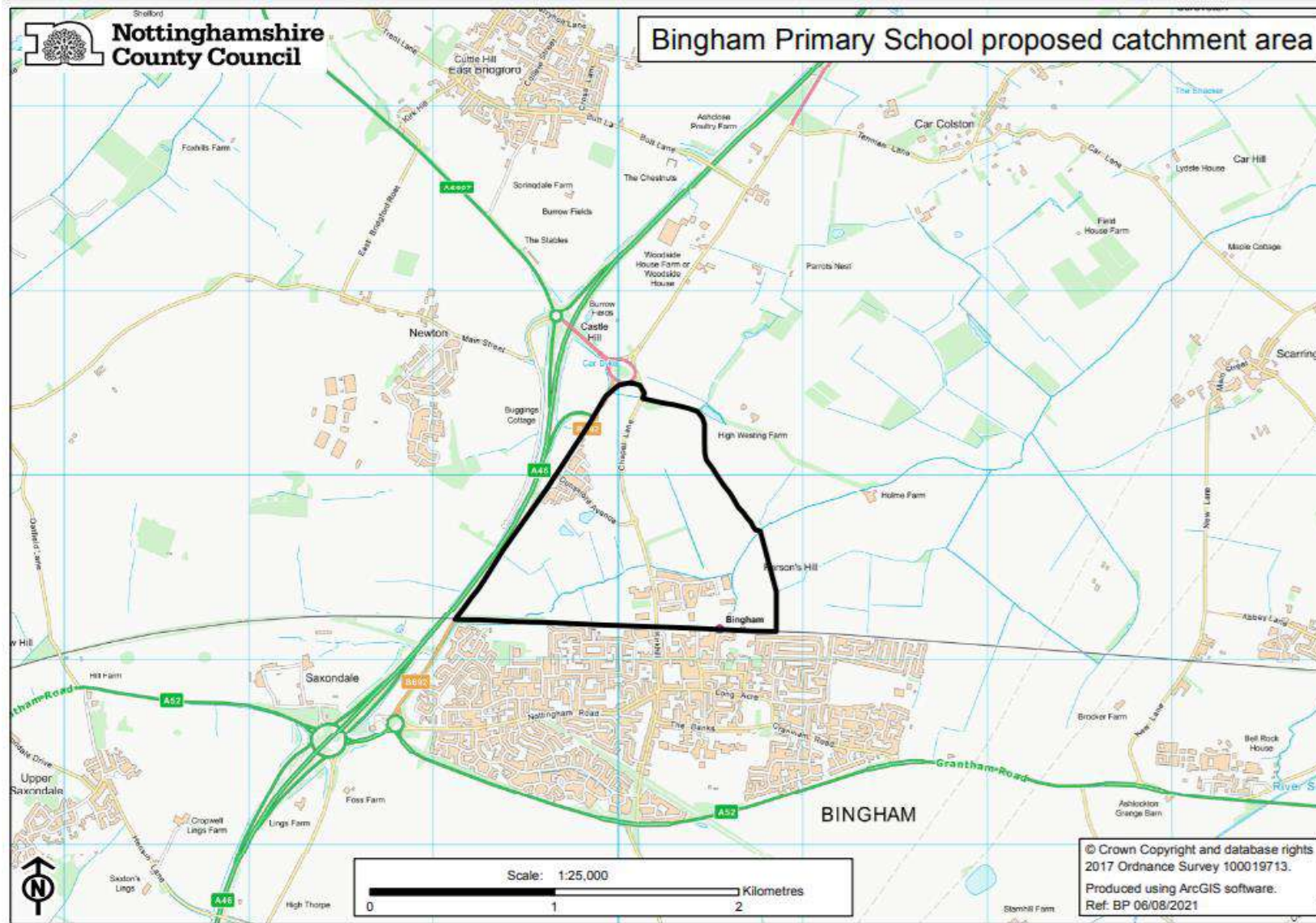


**Nottinghamshire
County Council**



Google Maps

Proposed catchment:



Planned appearance:

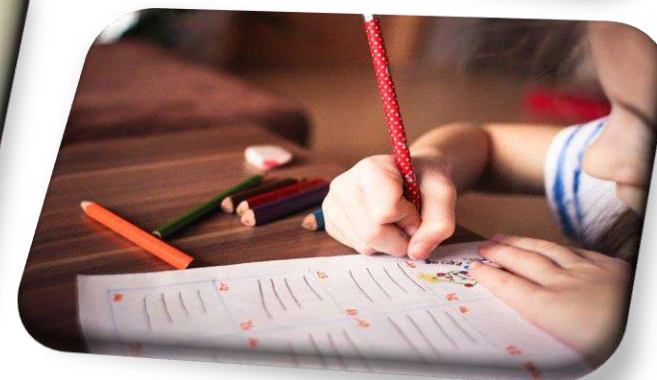


The Curriculum

The curriculum at Bingham Primary School will be **innovative and exciting** and meet the requirements of the National Curriculum.

There will be:

- Full Wrap Around Care available.
- High Expectation - we aim for pupils to be set up academically for both their next steps in education (transition on to secondary school) and for their future life beyond their education.
- We teach our learners how to keep themselves safe, how to have good nutrition, be physically active and understand how these things not only impact on their physical but also on their mental wellbeing.
- A firm foundation of English, Maths and Science will be in place, with all other subjects having an equal fitting – History, Art, Geography, Modern Foreign Language, RE, Design Technology, Computing, PHSE, Music, PE, Outdoor Learning (Forest School).
- A curriculum based on enquiry and reasoning - pupils will taking autonomy, learning through first hand experiences. A personalised approach catering for more able pupils as well as children with additional education needs.
- Staff will be trained by industry experts and supported so they can provide the very best care and education for your children.
- The very latest technology to ensure your children have world class skills, ready and prepared for life in modern Britain.



Why C.I.T?

We have a proven track record for supporting schools through to achieving outstanding outcomes through personalised and individualised approaches. We do not advocate a “one size fits all” mantra. This approach is underpinned by an ethos of high challenge, high support and achieving excellence through equity.

”

C.I.T challenged and supported Isaac Newton to improve standards. The new Headteacher had a powerful impact on the school bringing a clarity of vision that enabled rapid improvement across the school with a relentless focus on ensuring the best for each pupil.



Isaac Newton Primary School

”

The new Leadership Team took swift and effective action to bring about rapid improvements. Ofsted inspectors praised the new Head for identifying the need to develop pupils attitudes to learning and changing the way in which they use teaching assistants to support pupils.



Caythorpe Primary School



Support Hub

The Trust provides a Support Hub for the benefit of all C.I.T schools. The Hub operates 52 weeks of the year and exists to ensure that schools are provided with the highest quality resources and services so that staff working within schools can focus on educating their pupils. Services include:

- Education
- Safeguarding
- Finance
- HR and Payroll
- Central Fundraising Team (Over £1m raised since fruition for school projects)
- PR & Marketing
- Health and Safety
- Estates Management
- ICT
- Performance Management
- Health Checks



School Performance

- Foxfields Academy - Free School opened in 2020
- Linchfield Community Primary School & Pre-School
- Newly sponsored Primary Academy in 2020
- St Pauls Community Primary School & Nursery
- Newly sponsored Primary Academy in 2020
- Chapel St Leonards Primary School
- Newly Sponsored Primary Academy 2018
- Poplar Farm Primary - Free School opened in 2018

OFSTED RESULTS:

- The Priory School - Outstanding 2020
- The Garth School - Outstanding 2019
- Woodlands Academy - Outstanding 2019
- Sandon School - Outstanding 2017
- Ambergate Sports College - Outstanding 2017
- Greenfields Academy - Good 2019
- John Fielding School - Good 2019
- Isaac Newton Primary - Good 2018
- Caythorpe Primary School - Good 2017



We care about our staff and their wellbeing

In partnership with our external partner Croner, the HR Team collaborate and communicate effectively with all schools across the Trust to provide ongoing support and advice as and when needed.

We offer a 24 hour helpline for ALL C.I.T employees, for them to discuss:

**Family issues - medical information - lifestyle addictions - gambling
- financial - relationships - domestic abuse - insurance claims -
consumer issues - debt - legal - stress - childcare - housing**



Some members of staff who have used the service had this to say about it:

“They gave me legal advice and saved me money. I can’t believe it didn’t cost me anything.”

“It was a first class service to be fair, and helpfully relevant to my mental health.”

“They helped me with some financial issues and helped put me on the right track with my debt management.”





This consultation opened on Thursday 7th October 2021 and will close on Thursday 18th November 2021.

“Should C.I.T enter into a funding agreement with the Secretary of State?”

Please email jacki.bartram@citacademies.co.uk any feedback
or use the online form on our website.

Please let us know if you are interested in becoming a school governor.



Thank you for your interest.



Learn more about us

Visit our website: www.citacademies.co.uk

Follow us on social media:

https://www.instagram.com/cit_academies/

<https://twitter.com/CITacademies>

<https://www.facebook.com/citacademies1>

<https://www.linkedin.com/company/11065556>



